

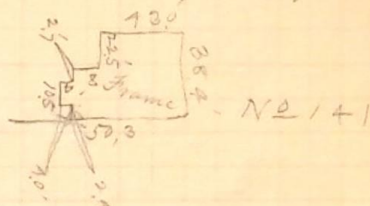
Served Notice on Mr Ellet
 of Oyster City Electric Light Company
 referring to City Ordinance as to
 place for Poles 2 20 P. M.,
 November 6th 1890
 Sanford Horton.

Measurements to houses on 83
 South Side of 21st St.

Wall Ave West R.M. Nov 12-90

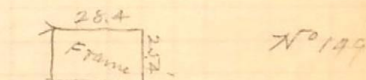
73+13.5

81.7



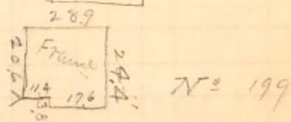
72+72

81.1



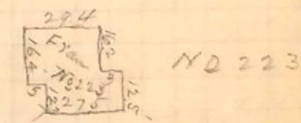
68+72.5

72.8



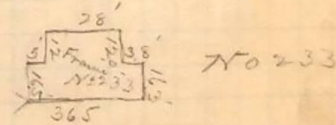
67+10.3

80.5



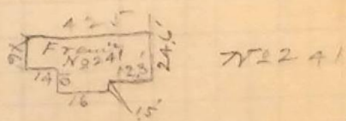
66+13.4

75.5



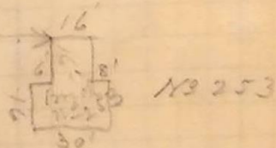
66+06.3

70.3



65+15.2

110



63+6.2

66.5

